

8~60V Input deeply Dimming, Constant Current LED Buck Controller

General Description

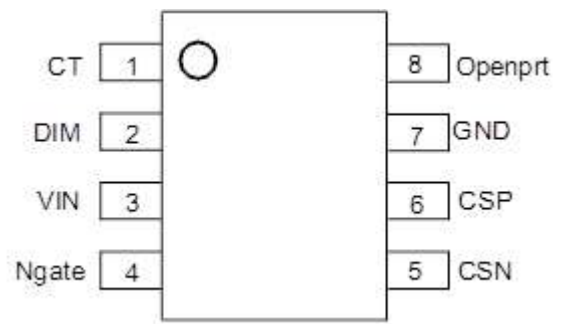
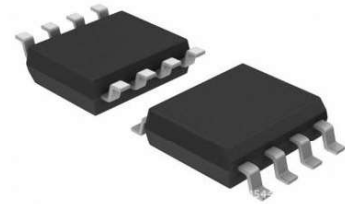
The QW2036 is a high current accuracy step-down converter designed in continuous current mode for driving the high brightness Light Emitting Diodes(LED). The QW2036 employs patent protected analog dimming LED method to regulate a high accuracy LED current and fine dimming curve. Moreover, this control scheme provides a constant switching frequency in applications. The QW2036 includes anti-stuck function for power-up and open-load check function.

The QW2036 implements frequency jitter for EMI. The QW2036 is available in SOP-8 package.

Features

- Wide Input Range: 8V to 65V
- Original analog dimming method for deeply dimming and linearity dimming curve
- Inherent Original frequency jitter for EMI
- Inherent Anti-stuck function
- Constant Switching frequency when Dimming
- High Efficiency
- Internal Protection:
 - Under Voltage Protect (UVLO)
 - Thermal Overload Protection(OTP)
 - Open LED sign (Fault PIN). Auto restart when re-load.

Package Reference



(Top View) SO-8EP

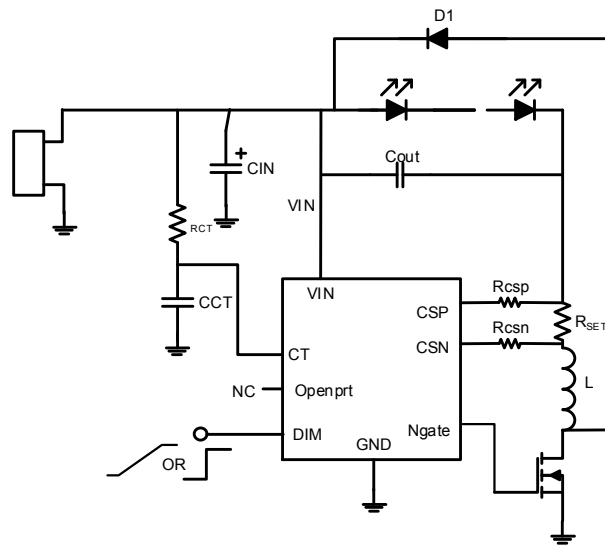
Applications

- Low Voltage LED Ceiling down Light
- Automotive/Decorative LED Lighting
- Low Voltage General Illumination/Industrial Lighting
- LED Back-up Light
- Signs/Emergency Lighting
- LED Stage Lighting

以上为部分内容, 如需完整资料, 请邮件联系: ✉ robert.liu@sinceretekmicro.com

The information may not be complete. If you need documentation, please contact us.

TYPICAL APPLICATION



PIN FUNCTIONS

PIN#	Name	Description
1	CT	In deep analog dimming. Analog dimming auto transforms to PWM Dimming; LED load open, after counting 128 CT duty, Fault draw low. Internal Max Clamp to 5V.
2	DIM	Analog/PWM Dimming PIN. Internal Max Clamp to 5V.
3	VIN	Input Supply Pin (8V~65V) . Connecting a proper decoupling capacitor from VIN to GND
4	Ngate	MOSFET gate drive
5	CSN	LED Current Sense Input. Connecting the Current Sensing Resistor(R_{set}) that programs the LED average current between CSP and CSN. $I_{out}=0.24V/R_s$
6	CSP	Another terminal connecting Current Sensing Resistor(R_s) for program LED average current.
7	GND	Ground. The Source of Internal 65V MOSFET
8	OpenPrt	NC

以上为部分内容, 如需完整资料, 请邮件联系: ✉ robert.liu@sinceretekmicro.com

The information may not be complete. If you need documentation, please contact us.